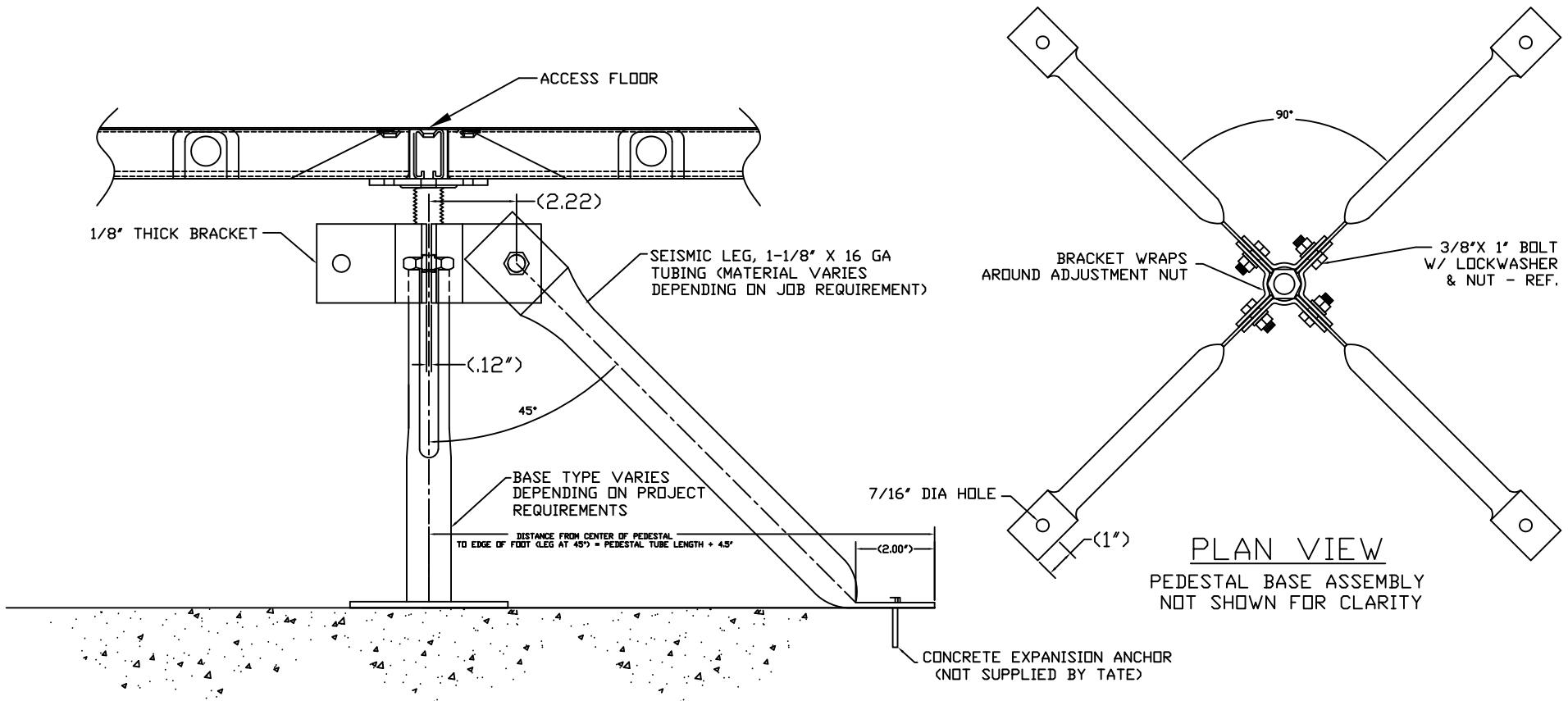


4 Way Heavy Duty Seismic Brace Assembly Kit for Bolted Stringer System



ELEVATION VIEW

ONLY ONE LEG BRACE SHOWN FOR CLARITY, SEE PLAN VIEW FOR LEG ASSEMBLY

PLAN VIEW
PEDESTAL BASE ASSEMBLY
NOT SHOWN FOR CLARITY

NOTES:

1. SPACING OF BRACES WILL DEPEND UPON PROJECT REQUIREMENTS.
2. SEISMIC ASSEMBLIES USING A TYPE 1A, 2B, 3B, 2CF, 3CF, 4CF AND 4DF SHALL USE A BRACKET WITH A 5/8" RADIUS TO WRAP AROUND A 3/4" STUD AND NUT.
3. SEISMIC ASSEMBLIES USING A TYPE 5EF, 5GF OR 6GF MUST BE SWAGED AND SHALL USE A BRACKET WITH A 3/4" RADIUS TO WRAP AROUND A 7/8" NUT.